



COMMON MODE CHOKES

ACM0411CI

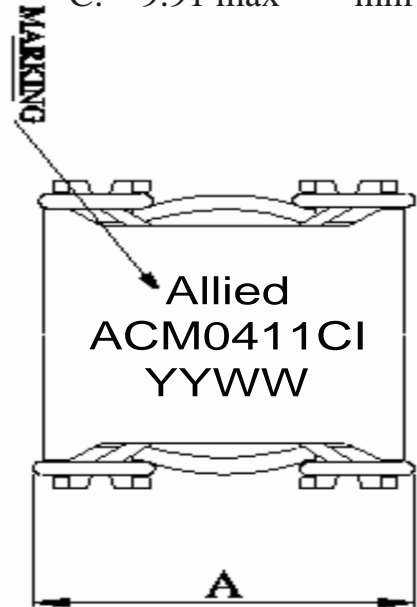
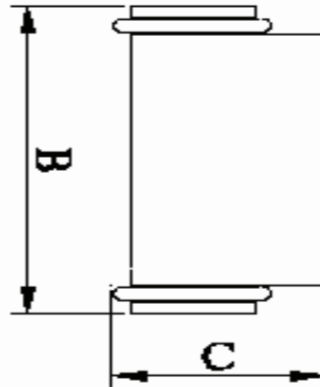
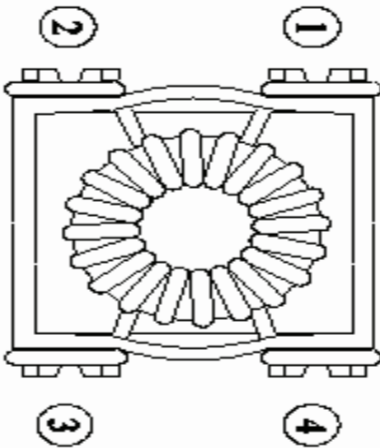
- Common mode choke for power application
- High Impedance to minimize common mode noise
- Excellent EMI performance
- Industrial temperature range: -40°C to +130°C

Electrical Specifications @25°C						
Part Number	Inductance @10KHz/0.05V		Isat	DCR		HI-POT (Vrms)
	L(1-4)	L(2-3)		1-4	2-3	
ACM0411CI	1.47mH±35%	1.47mH±35%	2.8A	80mΩ	80mΩ	N1(1-4) to N2(2-3) 1.0KV 3mA 3Sec

All specifications subject to change without notice.

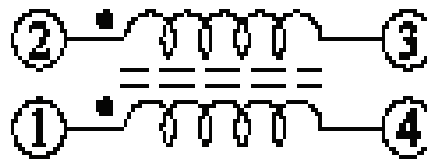
MECHANICAL

- A: 17.02 MAX. mm
- B: 19.56 MAX. mm
- C: 9.91 max mm





SCHEMATIC



PCB LAYOUT

